

YS-800

Y-TIP DİŞLİ PİSLİK TUTUCU

Y-TYPE SCREWED END STRAINERS

- * Hassas döküm
- * Y - tipi
- * Paslanmaz çelik süzgeç
- * Dişli iç kap
- * Bağlantı vida dişleri:
ANSI B2.1 / BS 21 / DIN
- * Çalışma basıncı: 50 bar
- * Çaplar: 1/2"- 2"
- * Investment casting
- * Y type
- * SS 316 screen
- * Screwed - in cap
- * Connecting threads:
ANSI B2.1 / BS 21 / DIN
- * Working pressure: 800 psi
- * Sizes: 1/2"- 2"

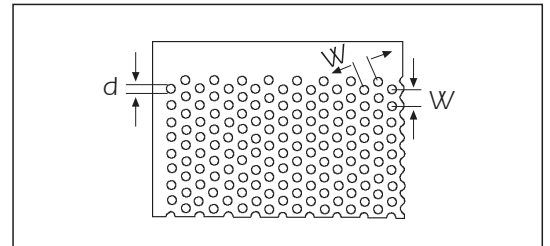
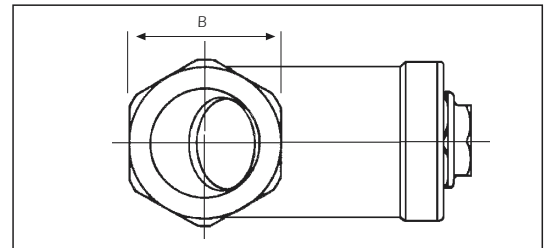
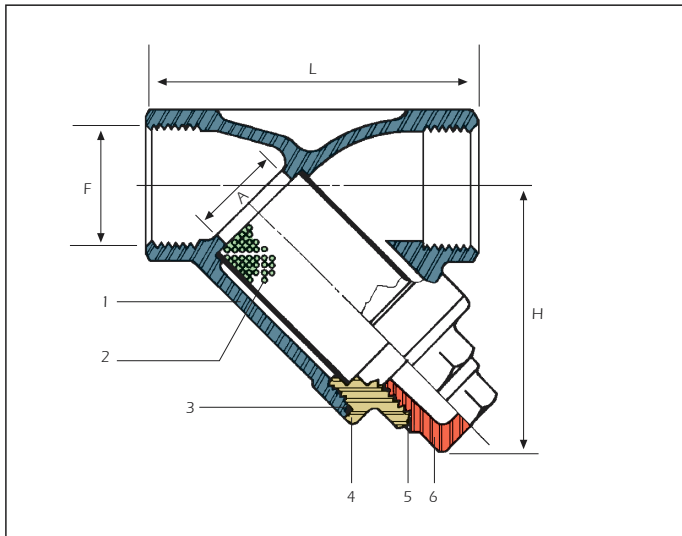


YEDEK PARÇALAR / SPARE PARTS

NO	Parça adı / Part name	Malzeme / Material
1	Gövde / Body	ASTM A351 - CF8M
2	Süzgeç / Screen	SS 316
3	Conta / Gasket	Teflon
4	Kaporta / Bonnet	ASTM A351 - CF8M
5	O - ring	Viton
6	Tahliye tapası / Blow off	ASTM A351 - CF8M

BOYUTLAR / DIMENSIONS

Ölçü / Size (mm)	1/4"	3/8"	1/2"	3/4"	1"	1- 1/4"	1- 1/2"	2"
A	10	12	15	20	25	32	40	50
B	24	24	26	33	41	49	56	69
(H)	51	51	51	60	72	77	87	103
L	65	65	65	80	90	105	120	140
F	1/4 BSP or NPT	3/8 BSP or NPT	1/2 BSP or NPT	3/4 BSP or NPT	1 BSP or NPT	1- 1/4 BSP or NPT	1- 1/2 BSP or NPT	2 BSP or NPT
W	2	2	2	2	2	2	2	2
d	1	1	1	1	1	1	1	1



AYVAZ HACI AYVAZ ENDÜSTRİYEL MAMÜLLER
SANAYİ VE TİCARET A.Ş.
www.ayvaz.com

Atatürk Sanayi Bölgesi, İstasyon Mah. Mustafa İnan Cad. No: 36
34860 Hadimköy - İSTANBUL - TÜRKİYE
Tel : 90 (212) 771 01 45 (pbx)
Fax : 90 (212) 771 37 34 - 90 (212) 771 25 60, e-mail: info@ayvaz.com

DISTRIBUTOR